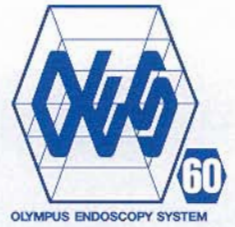


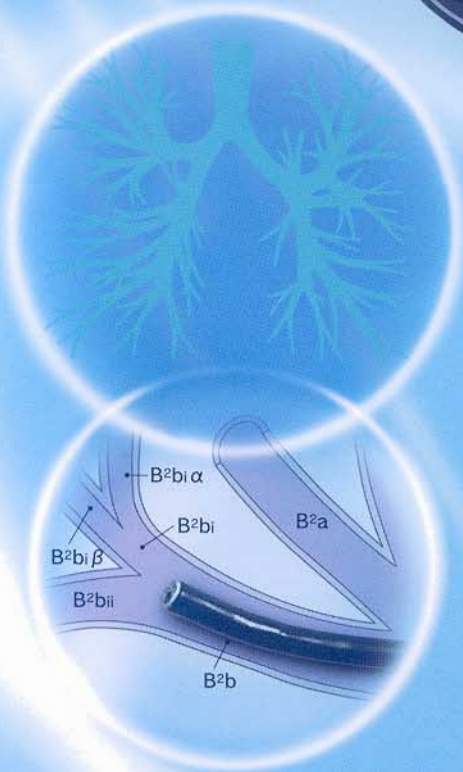
OLYMPUS®

Your Vision, Our Future



OES Bronchofiberscope
OLYMPUS BF TYPE P60

Versatile scope with improved image quality ideal for routine use

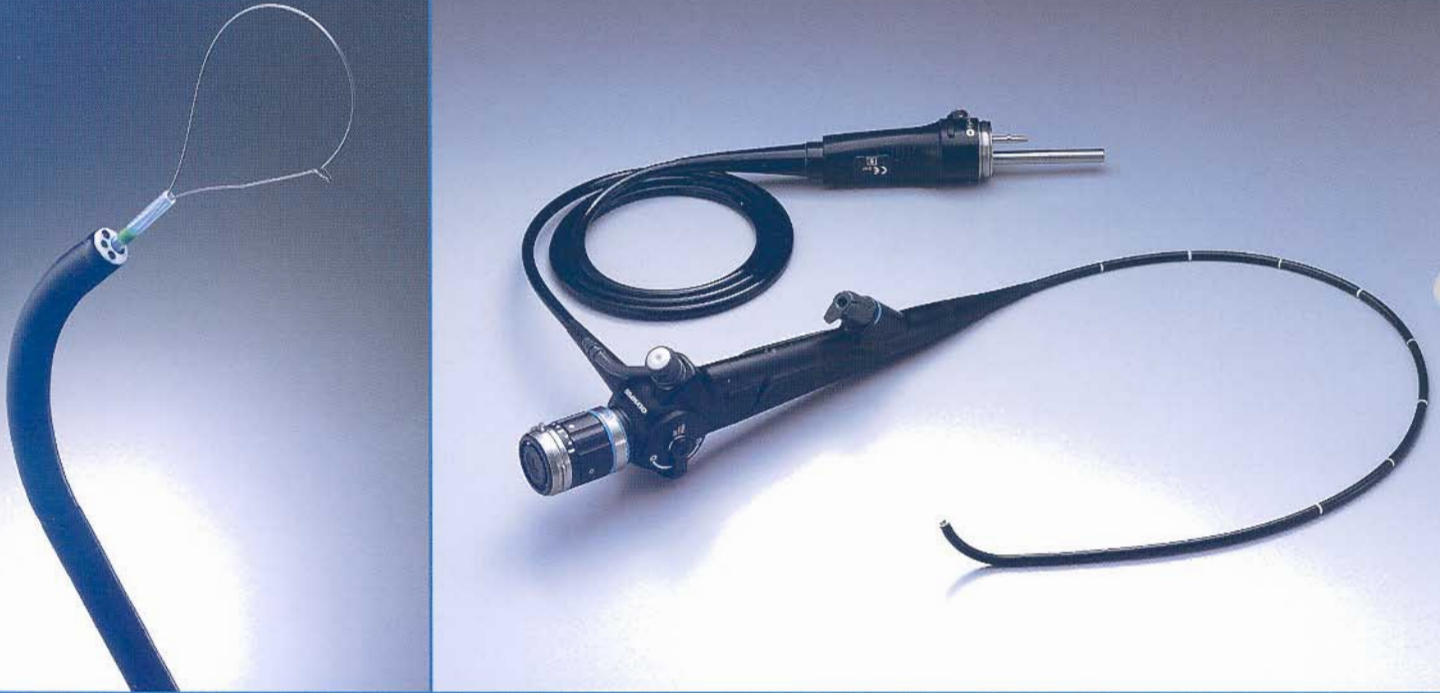


OES Bronchofiberscope

OLYMPUS BF TYPE P60



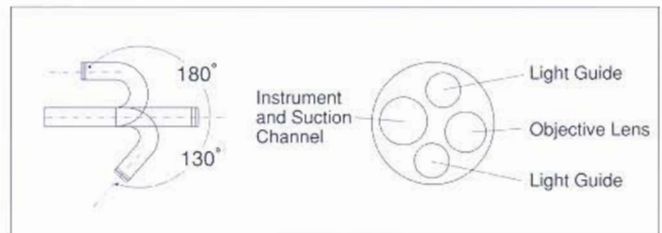
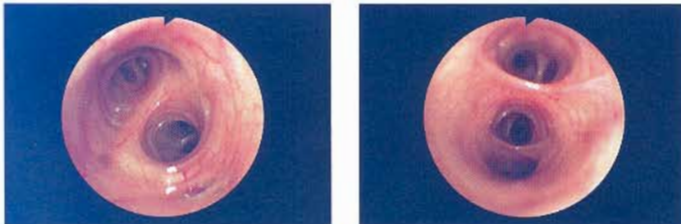
Significant improvements in image quality make this versatile scope ideal for routine applications



- Incorporates more image guide fibers than its predecessor, significantly improving image quality and making this scope suitable for a wide range of routine applications.
- 4.9 mm distal end diameter, 5.0 mm insertion tube diameter, and 2.2 mm channel diameter.
- Wide 120° field of view enables accurate observation of a wider area.
- 180° up/130° down angulation for easier maneuvering in the bronchi.
- 600 mm working length ideal for use in the tracheobronchial tree.
- High-frequency electrosurgical devices can be used with this endoscope.
- Compatible with both OES and EVIS video systems.

■ Specifications

Optical System	Field of view	120°
	Direction of view	0° (Forward viewing)
	Depth of field	3~50mm
Insertion Tube	Distal end outer diameter	4.9mm
	Insertion tube outer diameter	5.0mm
	Working length	600mm
Instrument Channel	Channel inner diameter	2.2mm
	Minimum visible distance	5mm from distal end
Bending Section	Angulation range	Up180°, Down130°
Total Length		900mm



Specifications, design and accessories are subject to change without any notice or obligation on the part of the manufacturer.

OLYMPUS

OLYMPUS CORPORATION
Shinjuku Monolith, 3-1 Nishi-Shinjuku 2-chome, Shinjuku-ku, Tokyo 163-0914, Japan
OLYMPUS WINTER & IBE GMBH
Kuehnstrasse 61, 22045 Hamburg, Germany
OLYMPUS EUROPA GMBH
Postfach 10 49 08, 20036 Hamburg / Wendenstrasse 14-18, 20097 Hamburg, Germany
OLYMPUS AMERICA INC.
2 Corporate Center Drive, Melville, N.Y. 11747-3157, U.S.A.
OLYMPUS LATIN AMERICA, INC.
6100 Blue Lagoon Drive, Suite 390 Miami, Florida 33126-2087, U.S.A.
KEYMED LTD.
Keymed House, Stock Road, Southend-on-Sea, Essex SS2 5QH, England

OLYMPUS SINGAPORE PTE LTD.
491B River Valley Road #12-01/04, Valley Point Office Tower, Singapore 248373
OLYMPUS HONG KONG AND CHINA LIMITED
Room 1520-1527, Ocean Centre, 5 Canton Road, Tsimshatsui, Kowloon, Hong Kong
OLYMPUS BEIJING REPRESENTATIVE OFFICE
Room 1401, East Tower, Gong Yuan Nobe Royal Palace, Nobe Gong Yuan Xile, Jianguomenwai, Dongcheng District, Beijing, 100005, China
OLYMPUS MOSCOW LIMITED LIABILITY COMPANY
117071, Moscow, Malaya Kaluzhskaya 19, bld. 1, fl.2, Russia
OLYMPUS AUSTRALIA PTY LTD.
31 Gilby Road, Mount Waverley, VIC., 3149, Australia

www.olympus.com

Printed in Japan R394SB-0604