

EBUS-TBNA



Your Vision, Our Future

Specifications at a Glance

BF-UC180F	
Optical System	Field of view: 80° Direction of view: 35° forward oblique Depth of field: 2-50 mm
Insertion Tube	Distal end outer diameter: 6.9 mm Insertion tube outer diameter: 6.3 mm Working length: 600 mm
Instrument Channel	Channel inner diameter: 2.2 mm Direction from which EndoTherapy accessories enter and exit the endoscopic image:
Bending Section	Angulation range: Up 120°, down 90°
Total Length	890 mm

Currently Available Systems in 2014

The subset of features listed here refers to the usage of the processors in conjunction with the BF-UC180F endoscope.

	Hitachi Aloka ProSound F75	Hitachi Aloka ProSound α7	Olympus EU-ME2
Ultrasound Cable	MAJ-1597 and MAJ-2056		
Display Mode	B mode, M mode, D mode, FLOW mode, POWER FLOW mode, eFLOW, PW mode, THE mode		B mode, FLOW mode, COLOR FLOW mode, H-FLOW mode, PW mode, THE mode, Elastography (ELST) mode
Scanning Method	Electronic curved linear array		
Scanning Direction	Parallel to the insertion direction		
Frequency	5/7.5/10/12 MHz	5/8/10/13.3 MHz	5/6/7.5/10/12 MHz
Tissue Harmonic Echo (THE)	Broadband Harmonic (BbH)	Extended Pure Harmonic Detection (exPHD)	Tissue Harmonic Echo (THE)
	5 MP/6 MS/6.7 MR/7.5 MHz	4.44 MP/5 MS/6.67 MR/8 MHz	THE-P/THE-R (optimized penetration/resolution mode)
ELST Mode	Strain graph, Pressurization bar		
Scanning Range	60°		
Focusing Point	Up to four focusing points are available	Focus location adjustable, focus number adjustable	
Contact Method	Balloon method, Direct-contact method		

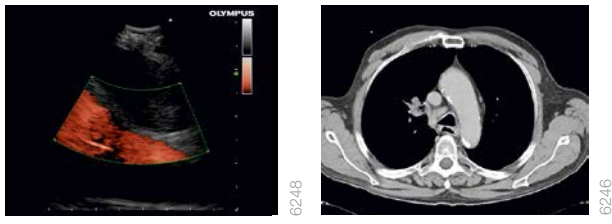
EBUS-TBNA Needles

ViziShot EBUS-TBNA Needles			
Article Name	Min. Working Channel Ø	Needle Length	Article Number
NA-201SX-4021	2.0 mm	20-40 mm	N2656630
NA-201SX-4022	2.0 mm	20-40 mm	N1775830

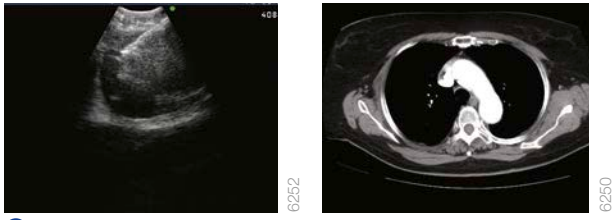
Subject to change without notice. No liability for errors or omissions.



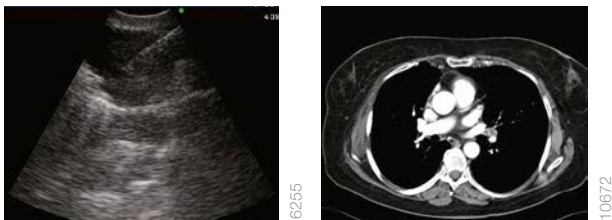
OLYMPUS EUROPA SE & CO. KG
Postbox 10 49 08
20034 Hamburg, Germany
www.olympus-europa.com



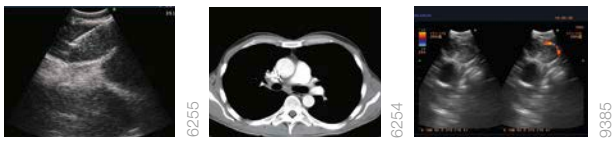
4R Enlarged paratracheal lymph node. Power flow mode confirms a vessel in close vicinity to the lymph node.



4L Staging procedure in a patient with NSCLC.



11L Staging procedure in a patient with NSCLC.



7 A patient suspected of having mediastinal lymphoma was referred for EBUS-TBNA and diagnosed as having sarcoidosis.

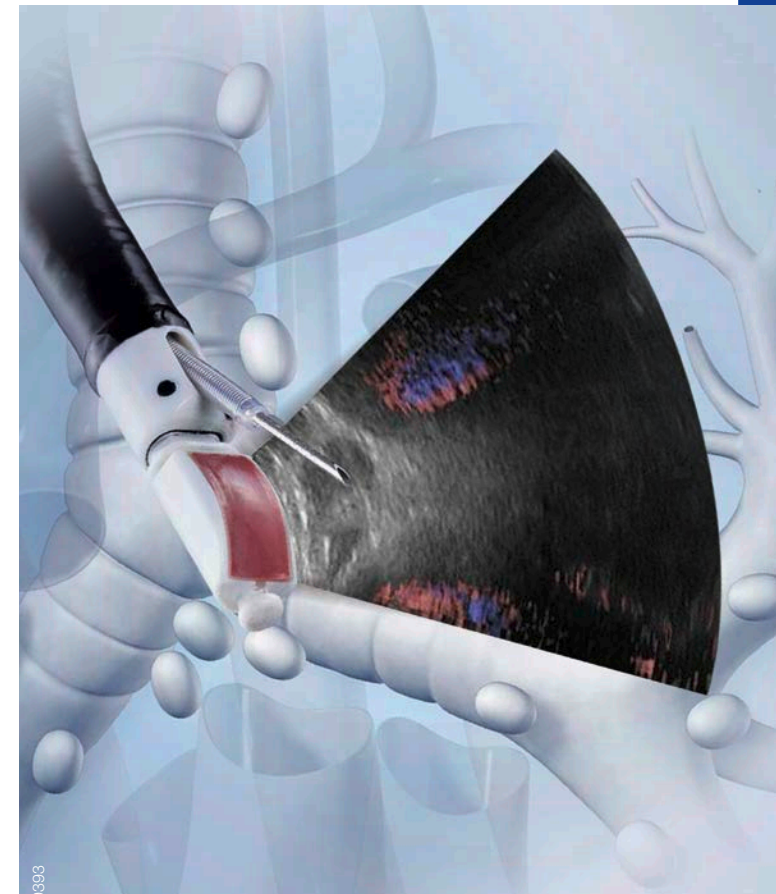
Dual Dynamic Display (DDD) of Hitachi Aloka ProSound α7 allows real-time observation of needle insertion and blood flow simultaneously.



More information can be found in our comprehensive EndoTherapy catalog or at www.olympus-europa.com.

EBUS-TBNA

Looking and Sampling beyond the Bronchial Wall.



E0428706 - 1.000 - 05/15 - PR - ED

9383

ENDOBONCHIAL ULTRASOUND – TRANSBRONCHIAL NEEDLE ASPIRATION

EBUS-TBNA is a reliable and commonly established technique that enables visualization and sampling of mediastinal, central or hilar lesions, and lymph nodes. With the ultrasonic bronchoscope BF-UC180F inserted into the trachea or the esophagus, the accessible lymph node station can be explored and the lesions outlined, while offering you the freedom to select from EndoTherapy devices like the dedicated 21G or 22G EBUS-TBNA needles.

Linear Ultrasound Bronchoscope BF-UC180F

The BF-UC180F linear ultrasonic bronchofibrovideoscope is specially designed for lymph node staging, including interlobar nodes, hilar nodes, and the mediastinum. The large 2.2 mm working channel provides compatibility to dedicated Olympus sampling devices and ensures less friction of devices inside the scope as well as improved suction capability. Moreover, it features an increased 60° scanning area, allowing sampling under full visual control. The impressive diagnostic value of the BF-UC180F is complimented by its compatibility to Aloka and Olympus ultrasound processors.



Universal Endoscopic Ultrasound Center EU-ME2

The EU-ME2 brings real clarity to your EBUS procedures, supporting better detection and characterization of lesions. A variety of new features such as harmonic echo and elastography helps to explore the future of endosonography. In addition, the EU-ME2 provides compatibility with linear and radial ultrasound endoscopes and radial ultrasound miniature probes.



EBUS-TBNA for Reliable Staging and High Yield

EBUS-TBNA has proven not only to be of great value for lymph node staging (N-staging) but also for the strategic use of cytology samples for molecular analysis. Olympus offers a line-up of EBUS-TBNA needles that enables specimen acquisition that can be used for cell-block preparation, immunohistochemistry, and molecular studies.

ViziShot

Olympus is unique in offering a 21G EBUS-TBNA needle in addition to the 22G needle.

- Adaptable sheath length for exact positioning within the ultrasonic view
- Echogenic tip design for excellent ultrasound visibility
- Secure needle locking mechanism for a safe and reliable procedure

ViziShot 21G

- Increased inner lumen for more sampling yield
- More stiffness for smoother needle penetration

ViziShot 22G

- More flexibility for wider accessibility to all sampling sites



ViziShot 22G and 21G.



EBUS-TBNA in a patient with NSCLC.

