

### BF-1TH190

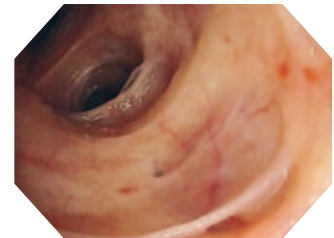
Therapeutic bronchoscope with superb HDTV image quality and a 2.8 mm instrument channel.



## Main features

### HDTV

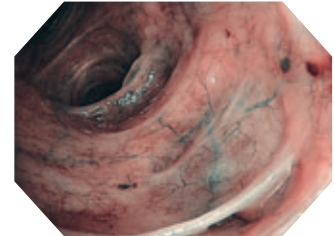
Superb HDTV images enable more detailed observation of bronchial surfaces.



HDTV

### NBI (Narrow Band Imaging)

NBI is an optical image enhancement technology that improves the visualisation of vessels on the mucosal surface. NBI is now 50% brighter compared to previous models.



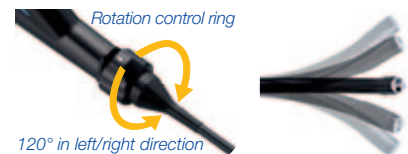
NBI

### Electronic magnification

Electronic magnification of 1.2x and 1.5x is now possible, allowing closer observation.

### Insertion tube rotation function

The insertion tube can be rotated left or right up to 120 degrees by simply turning a ring on the control section of the scope. This supports easier operation and smoother insertion with less operator fatigue.



### Waterproof One-touch Connector

A new connector design minimises the effort required for set-up prior to and in between cases. In addition, it is fully submersible without a water-resistant cap and eliminates the associated risk of an expensive repair due to accidental immersion.



### Ergonomic scope cable direction

The angle of direction of the universal cord has been improved so that the scope cable does not hang limp, even if the video system is located behind the bronchoscopist.

## Specifications

<b>Optical system</b>	Field of view	120°
	Direction of view	Forward viewing
	Depth of field	3–100 mm
	Image quality	HDTV
<b>Insertion section</b>	Distal end outer diameter	6.2 mm
	Distal end enlarged	
<b>Instrument channel</b>	Insertion tube outer diameter	6.0 mm
	Working length	600 mm
	Insertion tube rotation function	Yes
	Channel inner diameter	2.8 mm
<b>Instrument channel</b>	Minimum visible distance	3.0 mm from the distal end
	Direction from which endotherapy accessories enter and exit the endoscopic image	



<b>Bending section</b>	Angulation range	
<b>Electrocautery instrument compatibility</b>	Yes	
<b>Laser compatibility</b>	Nd: YAG, 810 nm diode	
<b>Compatible EVIS EXERA system</b>	Video system center OLYMPUS CV-190 Xenon light source OLYMPUS CLV-190	

Specifications, design and accessories are subject to change without any notice or obligation on the part of the manufacturer.