

Specifications at a Glance

Video Bronchoscope and Mobile Airwayscope

	BF-1TH190	MAF-TM
Insertion Tube OD (mm)	6.0	5.2
Distal End OD (mm)	6.2	5.1
Channel ID (mm)	2.8	2.6
Bending (Up/Down)	180°/130°	180°/130°
Rotation Function (Left/Right)	120°/120°	-
Working Length (mm)	600	600
Field of View	120°	90°
Depth of Field (mm)	3 – 100	3 – 50
NBI	✓	-
Comments	HDTV, OT	Fiberoideoscope

OT = One-Touch Connector

Grasping Forceps

Rubber Tip

Article Name	Min. Working Channel Ø	Opening Width	Article Number
FG-20P-1	2.0 mm	4.8 mm	026266

V-Shaped

Article Name	Min. Working Channel Ø	Opening Width	Article Number
FG-4L-1	2.0 mm	13 mm	026239
FG-25C-1	2.6 mm	13 mm	026244

Rat Tooth

Article Name	Min. Working Channel Ø	Opening Width	Article Number
FG-14P-1	2.0 mm	3.0 mm	026238
FG-26C-1	2.6 mm	3.5 mm	026233
FG-32C-1	2.8 mm	4.7 mm	026779

Alligator Jaw

Article Name	Min. Working Channel Ø	Opening Width	Article Number
FG-6L-1	2.8 mm	7.5 mm	026240

Basket Type

Article Name	Min. Working Channel Ø	Opening Width	Article Number
FG-17K-1*	2.0 mm	32 mm	026755
FG-16L-1*	2.8 mm	35 mm	026751
MA-479 (handle)			026951

*To be used with FG handle (MA-479)

More information can be found in our comprehensive EndoTherapy catalog or at www.olympus-europa.com.

Subject to change without notice. No liability for errors or omissions.

FOREIGN BODY REMOVAL

Solutions for Successful Extraction



FOREIGN BODY REMOVAL

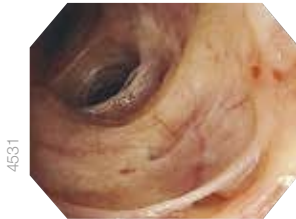
Removal of a foreign body using bronchoscopy can be challenging due to its size and consistency, as well as due to the limited access to its location. Objects may be removed with the help of a flexible bronchoscope and the appropriate EndoTherapy instruments.

EVIS EXERA III

Video Bronchoscope BF-1TH190

The powerful therapeutic bronchoscope BF-1TH190 offers not only superb HDTV image quality in white light observation but also in a dramatically improved NBI mode. The wide instrument channel of 2.8 mm allows for a broad range of EndoTherapy procedures to be carried out, while precise targeting is further enhanced by the unique insertion tube rotation function.

- Distal end \varnothing : 6.2 mm
- Insertion tube \varnothing : 6.0 mm
- Instrument channel \varnothing : 2.8 mm



Portable Bronchoscope MAF-TM

Portable flexible endoscope with expanded viewing and recording capability incorporating a monitor, LED light source, battery, and recording device in a single unit. Given its wide 2.6 mm diameter instrument channel, the MAF-TM is a suitable tool for foreign body removal in the emergency room.



Grasping Forceps – the Appropriate Device for Every Situation

A variety of EndoTherapy instruments, such as grasping forceps or retrieval baskets, can be used to remove foreign bodies, depending on the type of object involved. Olympus offers a versatile product line-up of grasping forceps...

... with **rubber tip:**

- Sharp or flat objects like needles and pins
- Slippery foreign bodies



1079
FG-20P-1

... with **V-shape:**

- Thin, flat objects
- Rat tooth for firm grip
- Prongs retract into sheath



1086
FG-4L-1

... with **rat tooth:**

- Flat objects such as coins
- Rat tooth for firm grip



1080
FG-26C-1

... with **alligator jaws:**

- Holding or removing objects
- Alligator jaws prevent slipping



1063
FG-6L-1

... as **basket type:**

- Smooth, round objects
- Large, spherical foreign bodies



1078
FG-17K-1