

ENDOALPHA CONTROL AND VIDEO MANAGEMENT

VMC-3

The Smarter Way of OR Integration



THE SIMPLER AND MORE INTUITIVE OR INTEGRATION SOLUTION

The VMC-3, with its intuitive design, focuses on the increasing demand of video management and communication in the OR while facilitating less training time. Olympus provides a solution that is easy to use, and supports frequently rotating OR staff. This solution offers all functions necessary for collaboration, mentoring and teaching within the OR and beyond, providing access to real-time information and video anywhere in the hospital*. SmartGuide navigation permits simple, workflow-oriented OR control, featuring HomeScreen and SceneSelection.

In combination with the control unit for endosurgery, UCES-3, the VMC-3 allows even more flexible, dynamic control of the entire OR.

Features

- Video management, communication and volume control
- Access to external PC's (HIS/PACS/Other)
- Privacy mode allows undisturbed surgery
- Designed for simple cabling and installation requirements
- Expandable with other ENDOALPHA solutions to meet all OR Integration needs (e. g. video streaming, documentation and OR control)

Benefits

- Tailored to **focus** on video management and communication
- Intuitive and simple **navigation** leads to reduced **training** time
- More productive interdepartmental **communication** by calling colleagues directly from the sterile and non-sterile field
- Improved workflow designed to increase staff **satisfaction**
- Sophisticated centralised control of the entire OR
- Efficient and convenient **collaboration, mentoring** and **teaching** due to availability of the live video everywhere within and even beyond the hospital
- Simple, workflow-oriented **SmartGuide** navigation, featuring HomeScreen and SceneSelection.
- **HomeScreen** app buttons allow quick identification of functions and can help to avoid potential user errors
- One click adaption of OR settings via **SceneSelection** improves the workflow according to procedure progress
- SceneSelection supports **standardisation** of surgeries

More advantages in combination with other ENDOALPHA solutions:

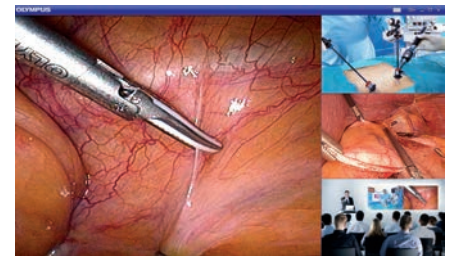
- Further improved **workflow** and increased **efficiency** during surgery

VMC-3 Specifications

| | | |
|--------------|------------------------|---|
| Power Supply | Voltage | 100–240 V AC / 50–60 Hz |
| | Power consumption | 200 W |
| Size | Dimensions (W x H x D) | 372 x 113 x 447 mm, 14.65 x 4.45 x 17.60 inches |
| | Weight | 9 kg, 20 lbs |
| Connectivity | Video input/output | 8x8** |
| | Video network | prepared for up to 3 integrated codecs |
| | Telephone interface | SIP |



Touch panel view in the OR



Screen view in the lecture room or doctor's office – Video Network Solution



*Partly Video Network Solution required. ** One SDI output is dedicated to the preview within the video management functionality. Olympus and ENDOALPHA are trademarks or registered trademarks of Olympus Corporation, Olympus America Inc., and/or their affiliates. Specifications, design, and accessories are subject to change without any notice or obligation on the part of the manufacturer.



OLYMPUS SINGAPORE PTE LTD. 491B, River Valley Road #12-01/04 Valley Point Office Tower, Singapore 248373, Singapore

OLYMPUS KOREA CO., LTD. Olympus-Tower, 114-9 Samseong-Dong, Gangnam-Gu, Seoul, 135-090 Korea

OLYMPUS (THAILAND) CO., LTD. 159 Serm-Mit Tower, 9th Floor, Unit #906-910, Sukhumvit 21 Road, North Klongtoey, Wattana, Bangkok 10110, Thailand

OLYMPUS (BEIJING) SALES & SERVICE, CO., LTD. A8F, Ping An International Financial Center, No. 1-3, Xinyuan South Road, Chaoyang District, Beijing, 100027 P.R.C.

OLYMPUS HONG KONG AND CHINA LIMITED L43, Office Tower, Langham Place, 8 Argyle Street, Mongkok, Kowloon, Hong Kong, China

OLYMPUS MEDICAL SYSTEMS INDIA PRIVATE LIMITED 102-B Time Tower M.G. Road Gurgaon 122001 Haryana., India

OLYMPUS AUSTRALIA PTY. LTD. 31 Gilby Road, Mt. Waverly VIC 3149, Australia

OLYMPUS NEW ZEALAND LIMITED 15d Paul Matthews Road, Albany, Auckland, New Zealand 1330